

Lateral Set Screw (w/o Snug Seal™) Installation Instructions



Picture 1

Standard Parts Description (Figure A):

- A. #6 screws & Inserts (Inserts come already mounted to the Tableaux frame)
- B. Ball point hex driver

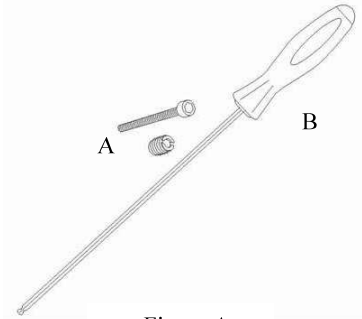
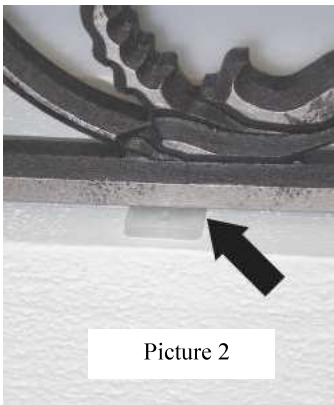


Figure A

1. Place the Tableaux® grille inside window opening. Make sure that the depth (the distance between the grille and the window) is uniform along the entire frame and consistent with other installations at the same site. For best visual effect the depth should probably be such that the grille is positioned at the midpoint between the wall surface and the actual window. In some instances it may be advantageous to place the grille closer to the window as the window outer border may help mask possible light gaps.

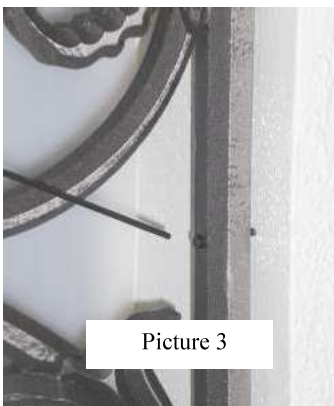


Picture 2

2. Center the grille so that any gaps between the grille and the window frame on the right and the left are the same (Picture 1).

3. Place shims under the grille (Picture 2) to center the grille so that gaps on the top and bottom are the same. You may also be able to help center the piece by tightening the bottom lateral screws.

4. Using the hex driver provided, tighten all lateral set screws just enough to create marks on the window frame marking each screw position (Picture 3). Make sure the piece is centered at all times. Note: In some installation where the frame is made of drywall material you may be able to skip this marking step and proceed with step 6. Be cautious though, only use this technique if the lateral set screws seem to easily penetrate the drywall without creating pressure on the grille's frame. Under pressure the grille frame may bend/bow and the screw may not penetrate the material as required for a safe installation (the screw needs to penetrate the window frame material for at least ¼").

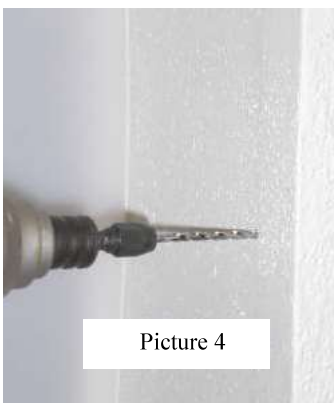


Picture 3

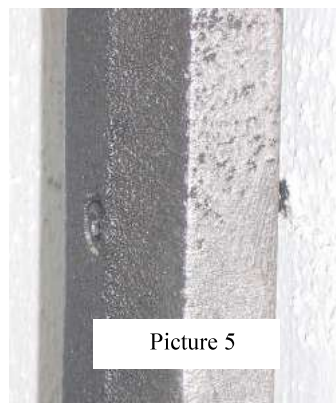
5. Loosen all lateral set screws and remove the grille from the opening. Pre drill holes at every mark generated in step 4 (Picture 4).

6. Reposition grille in the opening. Start tightening the left and right screws making sure they penetrate the pre-drilled holes. Proceed with the bottom and top screws. The screws should be completely tightened so that the head is completely concealed in the grille's frame (Picture 5) and the screw has penetrated the window frame material for at least ¼" (Figure B).

CAUTION: If you are not certain that all screws have penetrated the frame material for at least ¼" you may have to add additional safety hardware that would further secure the grille in place and prevent the grille from accidentally falling. This is extremely important as the grille may expand and contract to some degree due to temperature and humidity variations and fall if not properly secured.



Picture 4



Picture 5

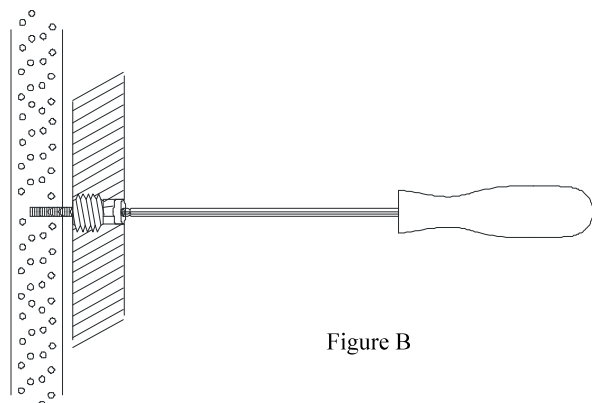


Figure B